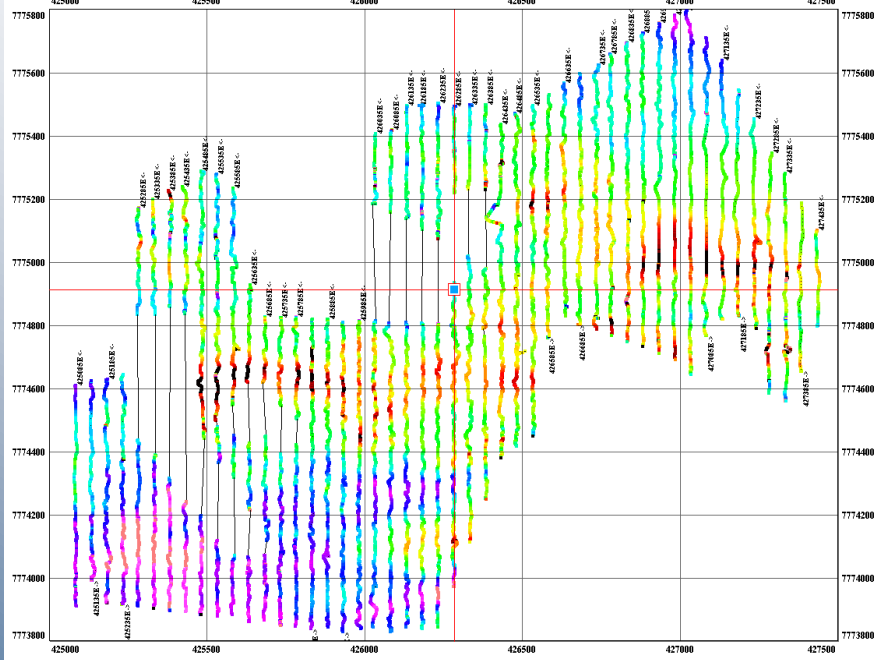
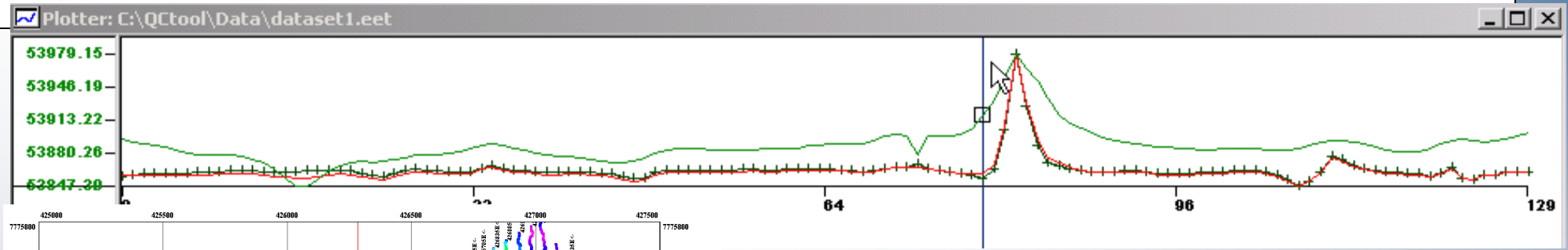


QCTool – V5.0.x

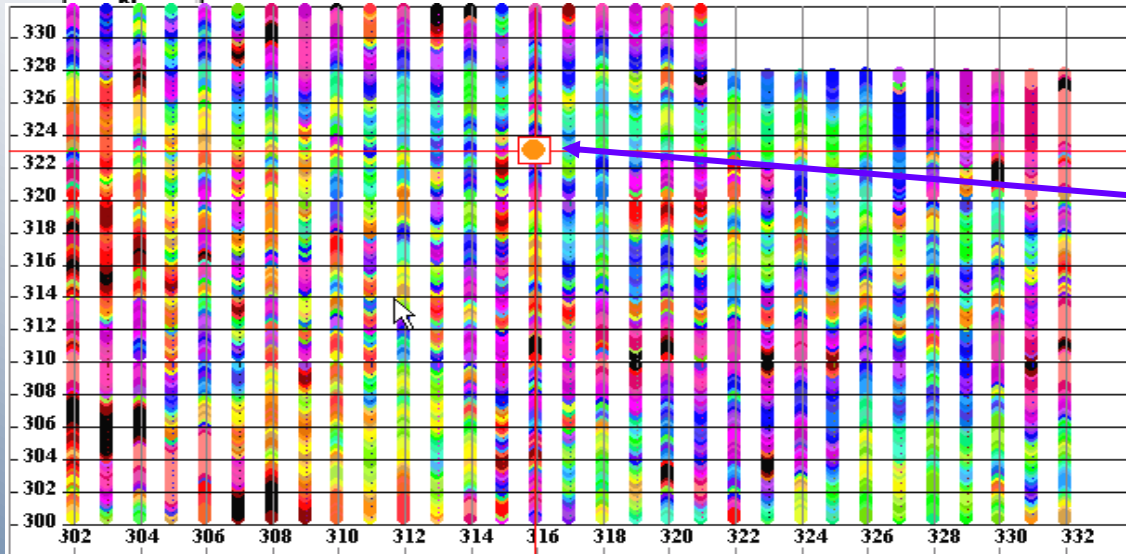
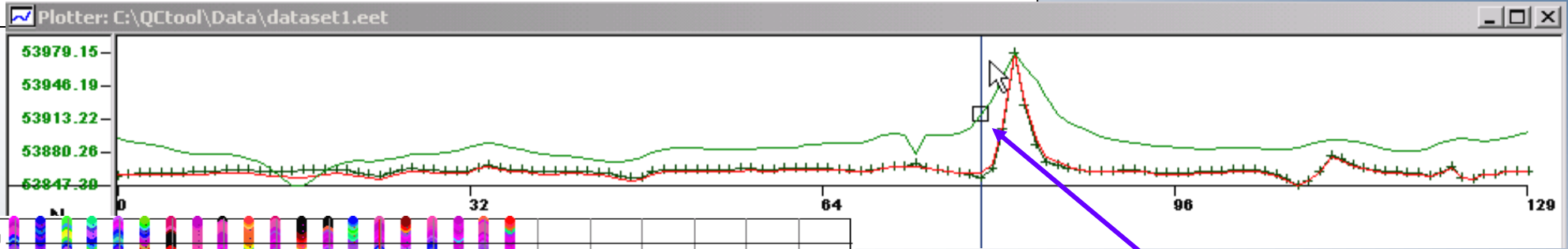


*for data Quality Control
editing, plotting, gridding,
mapping, processing and
and filtering*

ol\Data\dataset1.eet						
X()	B: Y()	C: TOP_RDG()	D: BOTTOM_RDG()	E: VRT_GRAD()	F: ▲	
5.000000	311.750000	53918.324219	53872.503906	-45.820000	14	
5.000000	311.500000	53934.011719	53942.500000	8.487000	14	
5.000000	311.250000	53956.031250	54217.406250	261.376007	14	
83	316.000000	311.000000	53979.148438	54720.160156	741.010986	14
84	316.000000	310.750000	53965.941406	54378.589844	412.648987	14
85	316.000000	310.500000	53953.113281	54117.082031	163.968002	14
86	316.000000	310.250000	53935.222656	53991.089844	55.866001	14
87	316.000000	309.779999	53919.246094	53949.285156	30.039000	14

Ground Magnetics – Gold Exploration

QCTool 2



*linked plotter,
profile data viewing
and
spreadsheet*

	Y()	C: TOP_RDG()	D: BOTTOM_RDG()	E: VRT_GRAD()	F:	
80	316.000000	311.750000	53918.324219	53872.503906	-45.820000	14
81	316.000000	311.500000	53934.011719	53942.500000	8.487000	14
82	316.000000	311.250000	53956.031250	54217.406250	261.376007	14
83	316.000000	311.000000	53979.148438	54720.160156	741.010986	14
84	316.000000	310.750000	53965.941406	54378.589844	412.648987	14
85	316.000000	310.500000	53953.113281	54117.082031	163.968002	14
86	316.000000	310.250000	53935.222656	53991.089844	55.866001	14
87	316.000000	309.779999	53919.246094	53949.285156	30.039000	14

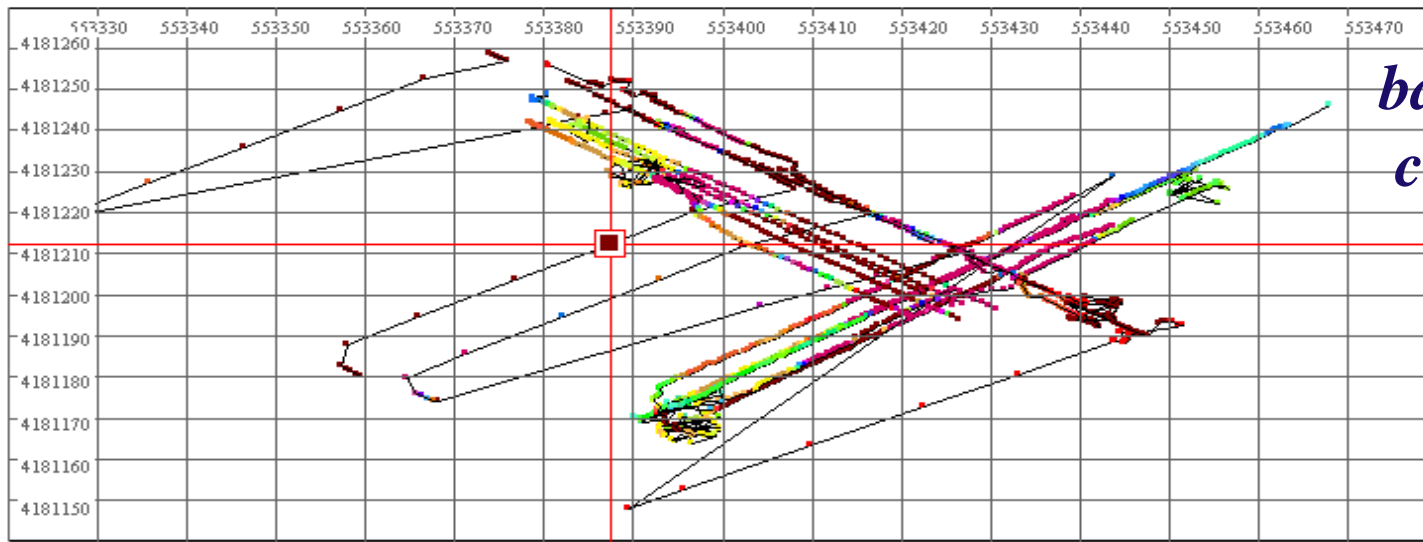
QCTool 3

E: CPQ980...	F: CPI9800S2()	G: CPQ9800S3()	H: CPI9800S3()	I: FIDS3()	J: reduced()	
-8.750000	20.478001	-195.750000	-20.469999	2015.979980	*	
-183.750000	20.	Formula Calculator				*
-292.250000	20.	Result: Formula: J = log(a)*sqrt(d)/d^3				*
-127.500000	20.	Save Load Clear Check Formula				*
-118.500000	20.	Formula result Row: 1 0.003026				*
-162.250000	20.	Rows <input checked="" type="checkbox"/> All Rows <input type="checkbox"/> All Lines From: 1 To: 51				*
-0.750000	20.	Functions: sin arcsin x^2 ln				*
-308.500000	20.	cos arccos x^3 log				*
-361.500000	20.	tan arctan 10^x sqrt				*
61.250000	20.	int abs exp PI				*
188.250000	20.	Numeric: 7 8 9 () Backspace				*
190.500000	20.	4 5 6 - / Delete				*
160.500000	20.	1 2 3 + * Degree				*
157.250000	20.	0 . + ^ Radians				*
163.250000	20.	Columns: A B C D E F G H I J K L M				*
163.500000	20.	N O P Q R S T U V W X Y Z				*
110.000000	20.	Apply Exit				*
102.250000	20.					*
145.250000	20.					*
160.250000	20.					*
176.750000	20.					*
227.750000	20.					*
229.500000	20.					*
45.250000	20.478001	101.250000	20.478001	2020.589966	*	

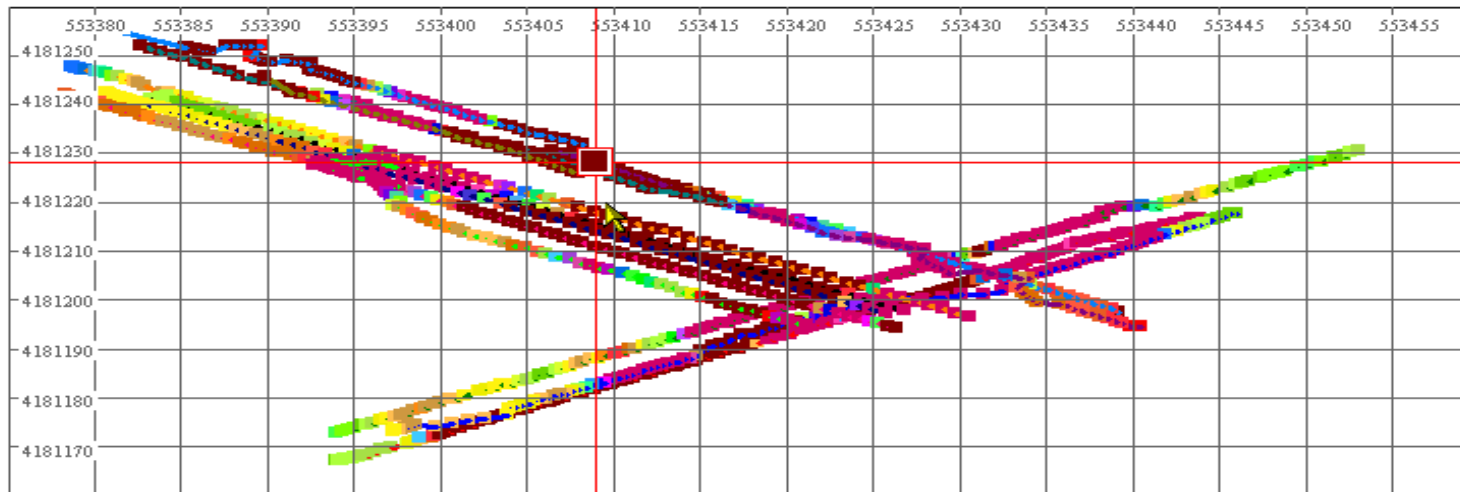
*Spreadsheet functions,
new channels calculator*

QCTool 4

Survey Cleaning

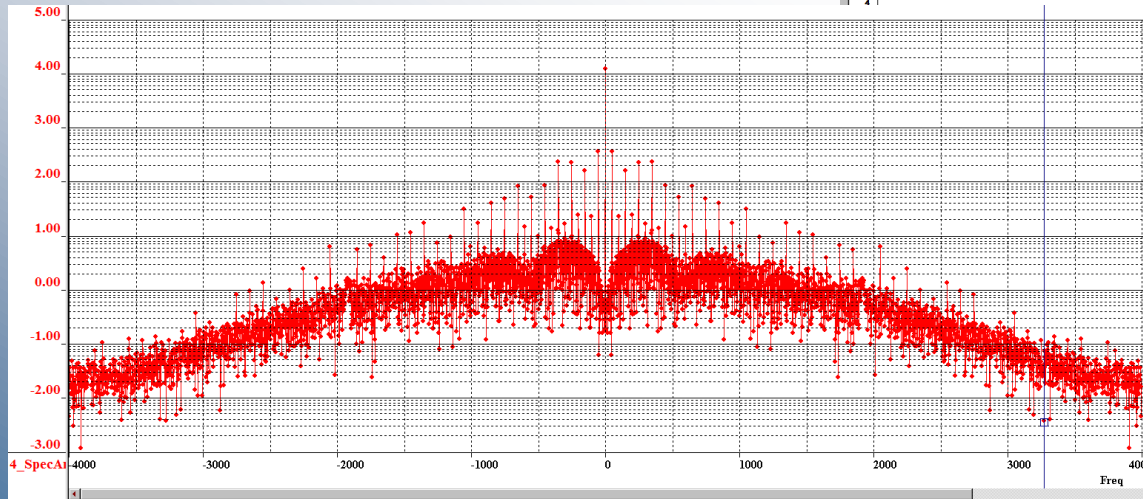
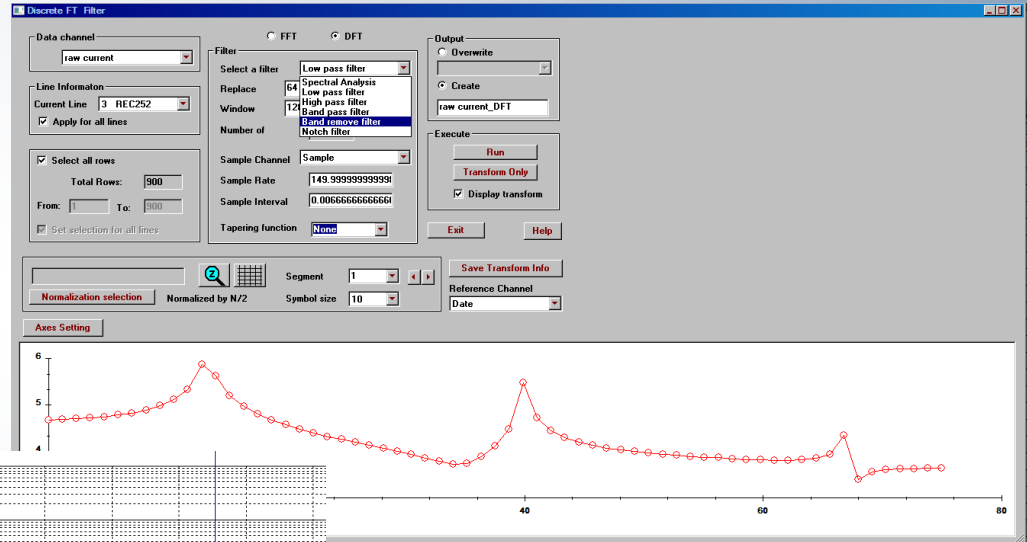
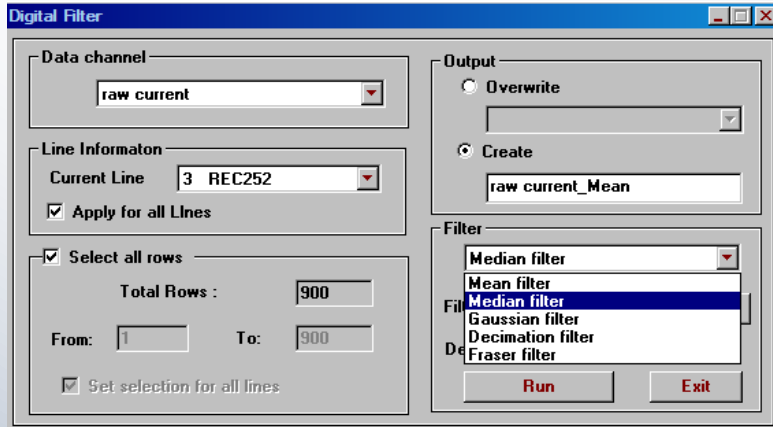


*bad data location editing
coloured data displays*



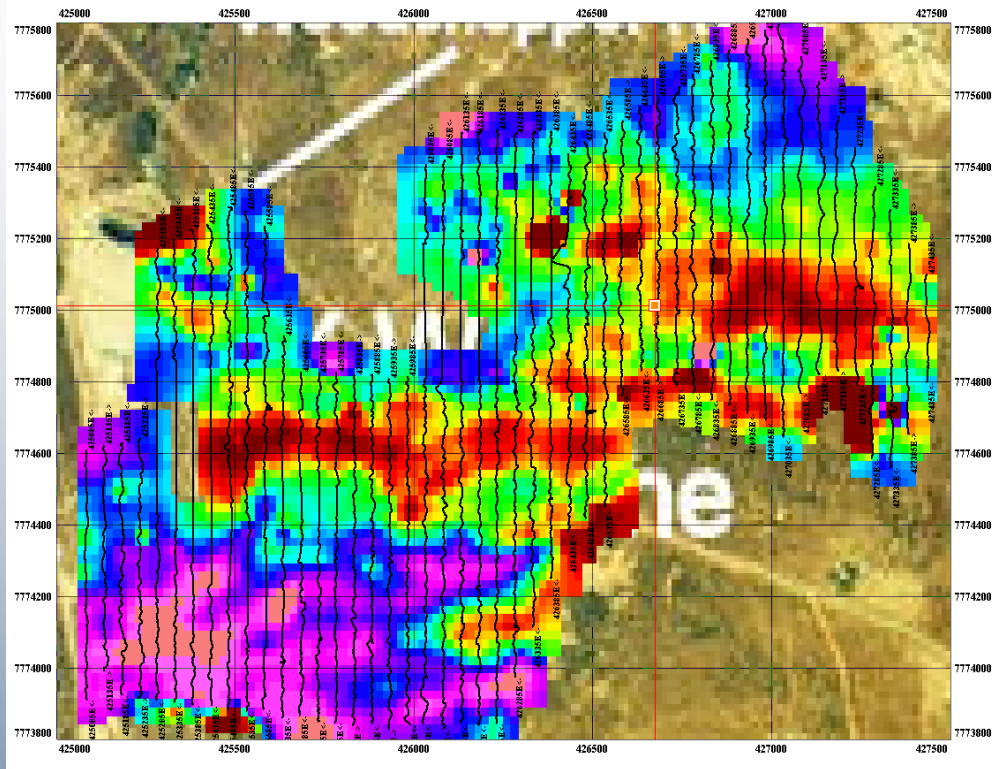
QCTool 5

Data Filtering
Spectrum Filtering
and Analyses – FFT, DFT
Raw vs filtered overlays



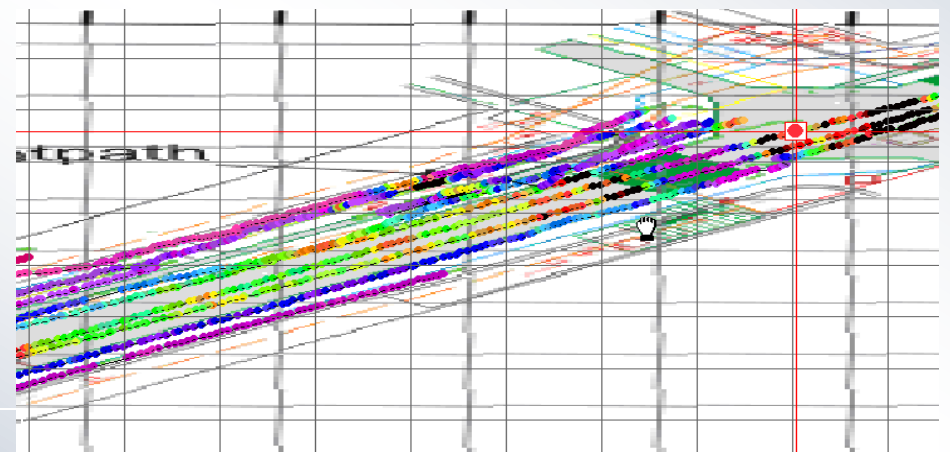
QCTool 6

Mapping



Ground Magnetics – Gold Exploration

*non-convex local contouring,
rectangular grid cells,
map underlays,*

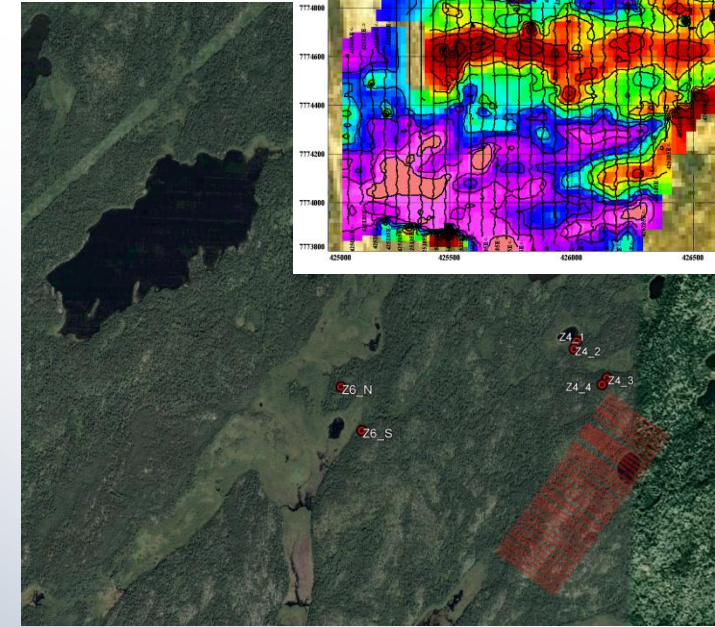
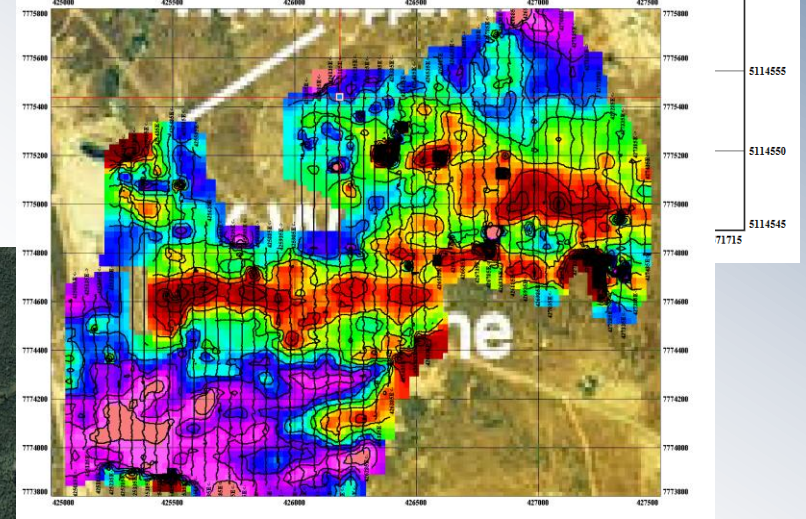
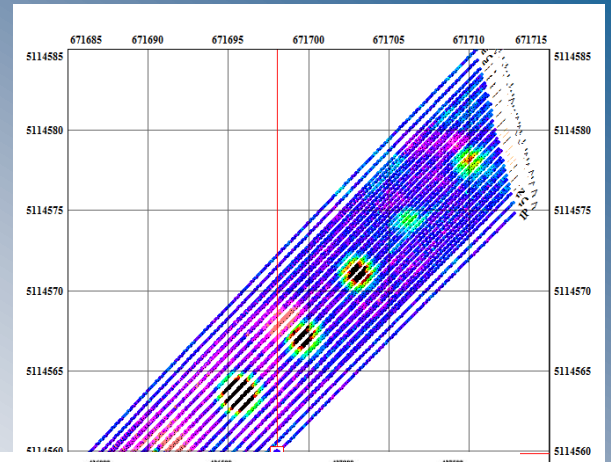


Fuel Dump contamination – EM31-3

QCTool₆

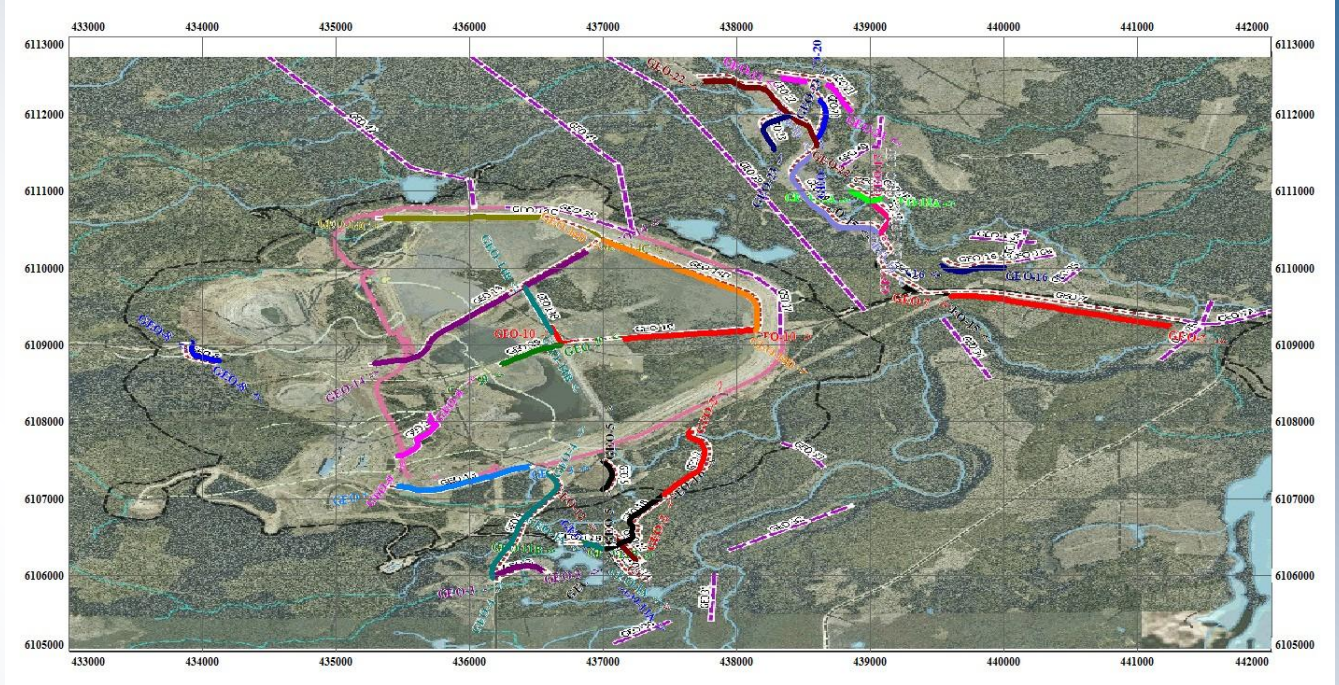
Mapping

- import/export for ArcMap, MapInfo
- create GoogleEarth files
- save as registered PDF
- export 2D Autocad files
- merge maps, transparencies
- annotate maps



QCTool 7

- *Easy to use*
- *Low cost*
- *Large or small datasets*
- *Small installation*
- *Perfect for infield QC*
- *Imports & Exports*
- *Data Merging and integration*
- *Map Calibration, Annotation and data overlays*



QCTool 8

Data Imports

- *Standard Ascii and Excel formats*
- *Geophysical Instrument formats*
- *Borehole log formats*
- *Topography formats*
- *Grid formats*
- *Garmin , Surpac, Geosoft, GPX, .bil, and much more*

ASCII XYZ
ASCII CSV
Binary XYZ
Scintrex CG3
Scintrex CG5
Scintrex IPR_12
Scintrex ENVI Cs/Navmag
Scintrex ENVI/ENVI PRO
Micro-g LaCoste Air-Sea (DAT)
Micro-g LaCoste Air-Sea (ENV)
Geometrics G-858/G-859(STN)
Geometrics G-856(STN)
Geometrics G-882
Stratagem impedance file
Zonge AVG (new format)
Zonge AVG (legacy format)
Zonge ZEN
GEM ASCII
SeaSPY(Marine Magnetics)
Geonics EM31 (ASC, M31)

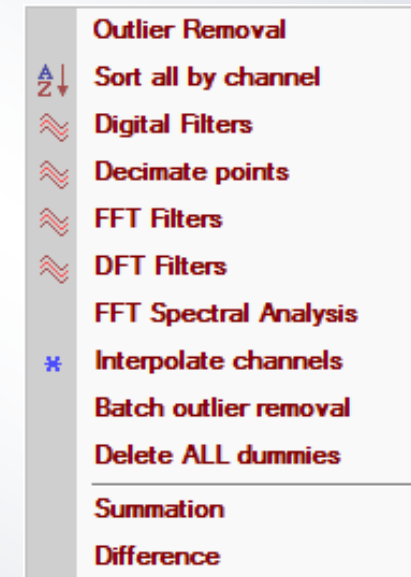
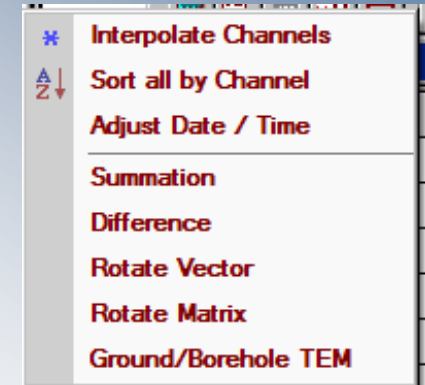
Geonics EM34 (G34)
Geonics EM38 (G38)
Geonics TEM
Pico
GDD IP
Garmin GDB
Phoenix CSAMT (AVG)
Phoenix CSAMT (STK)
Phoenix Time Series
Surpac STR
SMARTem24 (RAW)
Geosoft GBN
Geosoft GDB
MT/CSAMT EDI (Impedance)
MT/CSAMT EDI (Spectral)
MT/CSAMT TBL Format
VLF TBL Format
IRIS VLF ASCII
Universal Sounding Format(USF)
SEGY format

Geophysical logs (LAS)
GPS Exchange Format(GPX)
EGR Grid File
ArcGIS FLT
Band Interleaved by Line (BIL)
Geosoft grid file (grd)
GTOPO DEM file
CDED DEM file
Grid exchange file (GXF)

QCTool₉

Auxiliary Tools

- *Merge/Append Files*
- *Geographic Datum and Coordinate Transformations*
- *Data Filtering*
- *Vector and Matrix Rotations*
- *FFT/DFT Spectral analyses*
- *a range of digital filters*
- *Data stacking tools*



Specialized Processing Tools

- ***Gravity Processing*** – all gravity reductions including the most advanced topographic corrections available .
- ***Magnetic Processing*** – standard magnetic processing with enhanced derivative calculations and vector data and vector derivative de-rotations.
- ***IP Data Processing*** – QC/QA for data survey processing and integration, with mapping, line and decay plots, apparent resistivity and Cole-Cole calculations
- ***Magnetotelluric Processing***
- ***TDEM processing from raw time series***
- ***CSEM processing from raw time series***
- ***TDEM/FDEM editing and display tools***